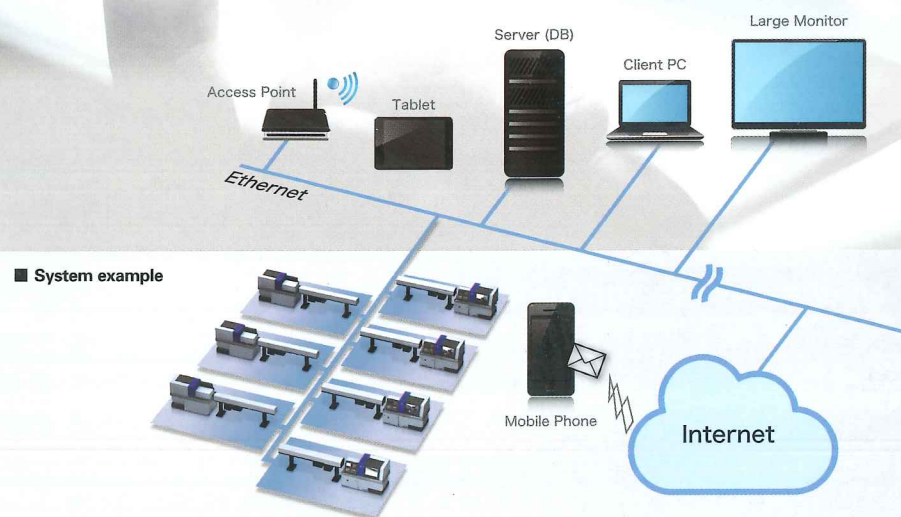


SMOOSS-i

AUTOMATIC LATHE MONITORING SYSTEM FOR PC & MOBILE DEVICES

Improve Utilization Rate and Enhance Productivity
with the Real-Time Status Monitoring of Multiple Machines



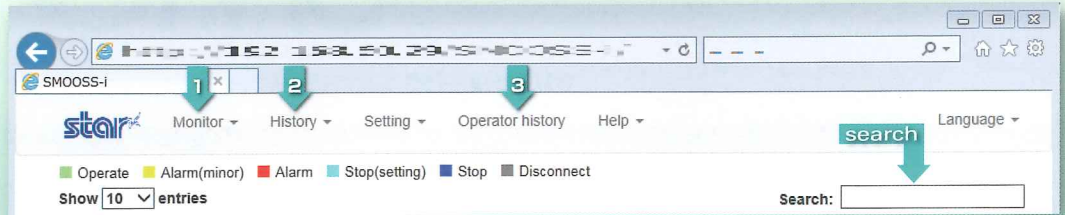
- A web application lets you check the status from your PC, smartphone, and tablet.
- Sums up cumulative numbers of the same part made by multiple machines.
- Sends an E-mail in the event of faults.

Visualize Past and Current Jobs. Put it Into Perspective to Enhance Productivity.

Universal Functions

Universal bar stays at the top of the screen to let you navigate between screens quickly.

- You can search and filter the data to narrow down the results.
- Data can be sorted by the field.



1 Status Monitor

It's possible to confirm the operation status of the machines in the LAN.

NC status List View/Tile View

[Functions]

- Shows the following items

Machine Name and Group Name

Plan	No. of Works to be Processed (Target)
Count	Actual No. of Works Processed
Achievement Rate	Count / Plan x 100% (Delay shows in pink bar. Bar changes to green)
O / S	One Cycle Stop Button Status Cycle time, NC program name, alarm message

- A group function shows the sum of the counts in a table when the same work is processed by multiple machines.
- NC status list and tile formats are available to meet your needs.

[Features]

- Since you can stay on top of the machine status even from a remote location, you can act quickly in the event of the unexpected stop.
- Progress vs. plan can be checked real-time for the number of works.
- You can identify what machine is processing which jobs from the program name.
- The system can be set up to show the status on a large display in the tile format which can be seen from afar.

Group1	Group2	Machine Name	OS	Plan	Count	AchievementRate[%]	ProgressRate[%]	Plan	Count	AchievementRate[%]	ProgressRate[%]	Cycle time
Parts AAA	Line 1	Machine 106		3,400	3,200	94.1	99.0	3,400	2,500	73.5	193.7	3m 00.0s
Parts AAA	Line 1	Machine 100		3,000	956	31.9	100.0	3,000	1,400	46.7	273.4	31.4s
Parts AAA	Line 1	Machine 105		---	---	---	---	---	---	---	---	---
Parts AAA	Line 1	Machine 101		10,000	1,950	19.5	49.6	10,000	6,000	60.0	122.4	1m 25.1s
Parts AAA	Line 2	Machine 112		6,000	1,600	26.7	51.2	6,000	2,000	33.3	61.6	1m 15.0s
Parts BBB	Line 3	Machine 117		3,000	300	10.0	23.4	3,000	2,300	76.7	199.5	2m 45.4s



► Tile Format

Completion Date and Time

[Functions]

- Shows the time until as well as the time and the date of the planned stop.
- Sorts by the chronological order of the planned stops.
- Push the DETAIL button to show the residual lifetime of all the cutting tools.

[Features]

- You can manage the job plan based on the time left before the machine stops.
- You can prepare the replacement tool in advance without going to the machine to check the remaining lifetime.

Group1	Group2	Machine Name	Completion time	Counter	Remaining time	No	Remaining count	Remaining time
Parts AAA	Line 1	Machine 106	---	---	3d 19h 35m	5	75,539	10d 0h 21m
Parts AAA	Line 1	Machine 100	---	---	5d 16h 41m	400	446	3h 53m
Parts AAA	Line 1	Machine 101	---	---	---	---	---	---
Parts AAA	Line 1	Machine 105	---	---	7d 21h 21m	0	54,442	5d 14h 50m
Parts AAA	Line 2	Machine 112	---	---	---	6	377	7h 51m
Parts BBB	Line 3	Machine 117	---	---	5d 0h 35m	300	95	4h 12m

History

Reviewing the history offers opportunities to improve operation status in a managed fashion.

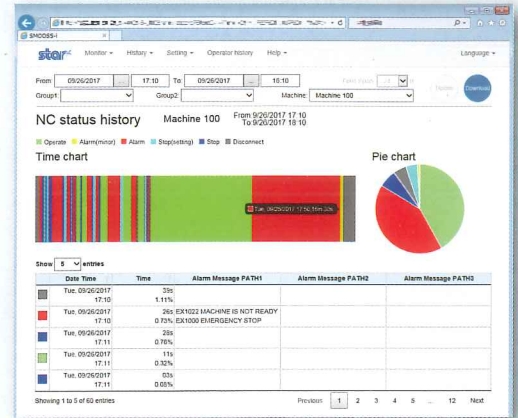
NC Status History

[Functions]

- Shows the operation status (run time, stop time, etc.) in chronological order in a bar chart and a table.
- Shows the operation status ratio in a pie chart.

[Features]

- Visualizes machine run time and stop time ratio to identify machines that need attention for long stop times and other issues.
- Alarms and operator messages showing at the time of the machine stop help identify the cause of the problem and determine the remedies.



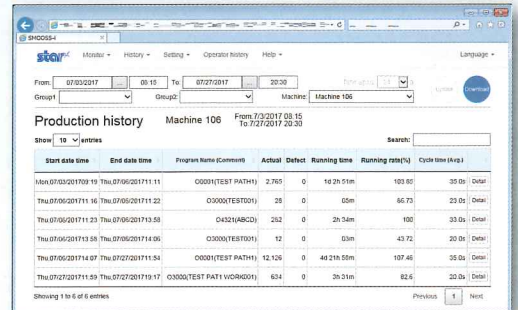
Production History

[Functions]

- Shows the counts of processed works by the kind of work, operating time, and the utilization rate.

[Features]

- You can search which machine processed which work for how many counts and when.
- Utilization rate can be compared by the kind of work processed.



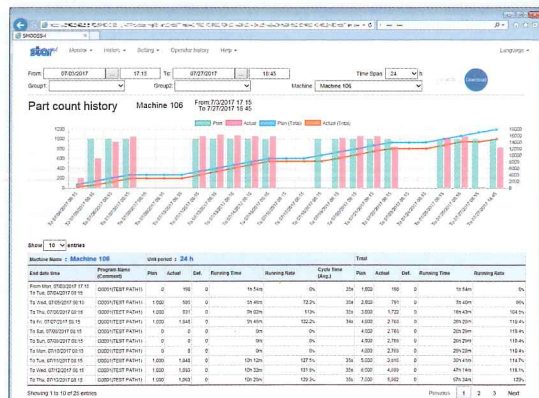
Part Count History

[Functions]

- Shows the plan and actual counts, operating time, and utilization rate by a specified interval of time.
- Graphically shows the count of works processed in the specified interval as well as the cumulative count.

[Features]

- <Job Finish Estimate> Allows you to predict the future progress vs. plan by comparing cumulative plan and actual counts.
- <History Review> Enables you to identify the day when the processed work count dropped significantly.



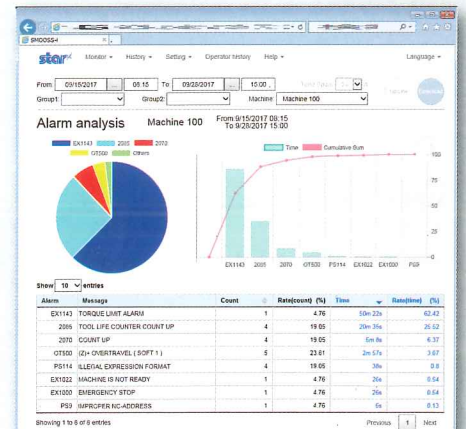
Alarm Analysis

[Functions]

- Alternately shows the number of alarms raised and the alarm stop time.
- Shows the ratio of the number of alarms raised or the alarm stop time in the pie chart and the table.

[Features]

- Helps identify the alarm which takes a long stop time to address.



3 Operation History

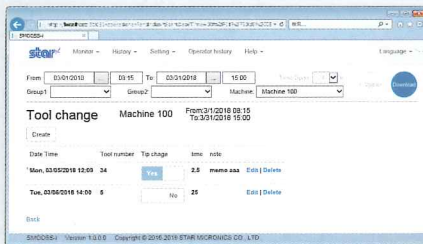
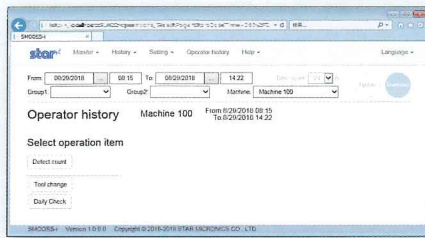
[Functions]

● Job records not obtainable from the machine can be input from a tablet and other devices to be stored as electronic data. (Example: cutting tool replacement, cleaning, lubricant, and material replenishing, daily check reports)

(※ The recorded items are freely changeable.)

[Features]

● By electrolyzing paper-based data, you can create the job report or search the past job records easily.



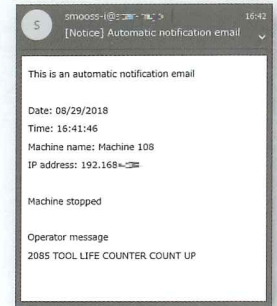
4 E-mail Notification

[Functions]

● Sends the description of the alarm by an E-mail when the machine stops for an alarm or other failures.

[Features]

● You can get the notification anytime and anywhere to act quickly in the event of machine trouble.



5 Other

- Easy to add a new machine
- No detail setting of the machine is necessary as the machine information acquisition application automatically identifies the machine type.
- Since this is a web-based application, you can use this with your PC, smartphone, or tablet.

Applicable Machines	Machine Tools of Star Micronics
Applicable CNC	FANUC: 0i-D / 0i-F / 16i-A * / 18i-A * / 21i-A * / 16i-B / 18i-B / 21i-B / 30i-A / 31i-A / 32i-A / 30i-B / 31i-B / 32i-B * Optional function is required.

- ※ iPad, iPhone, and Safari are trademarks of Apple Inc., registered in the U.S. and other countries.
- ※ The iPhone trademark is used under license from Aiphone Co., Ltd.
- ※ Android and Google Chrome are registered trademarks or trademarks of Google Inc.
- ※ Intel, and Intel Core are registered trademarks or trademarks of Intel Corporation or its subsidiaries in the United States and/or other countries.
- ※ Microsoft, Windows, Windows Server, Internet Explorer, and Microsoft Edge are registered trademarks or trademarks of Microsoft Corporation in the United States and/or other countries.

Server Hardware Requirements (Recommendations)

OS	Windows Server® 2016 Windows Server®2012 R2 Windows® 10 Pro 64bit
CPU	Intel® Core™ i3 processor or higher
Memory	8 GB or more
HDD	500 GB or more (RAID-1 type Recommended)

Client Device (Browser) Requirements

PC(Windows®)	Microsoft Edge®/Microsoft Internet Explorer® 11 Google Chrome
iPad®/iPad Air®/iPhone®	Safari®/ Google Chrome
Android Tablet/Smart phone	Google Chrome

STAR MICRONICS CO., LTD.

Machine Tools Division

1500-34 Kitanoya, Misawa, Kikugawa, Shizuoka, 439-0023 Japan

America, Europe Sales TEL.+81-537-36-5594 FAX.+81-537-36-5607
Asia Sales TEL.+81-537-36-5574 FAX.+81-537-36-5607

Star CNC Machine Tool Corporation
123 Powerhouse Road, Roslyn Heights, NY 11577, U.S.A.
TEL.+1-516-484-0500 FAX.+1-516-484-5820

Star Micronics GB Limited
Unit 1 Riverlands Business Park Raynesway DERBY DE21 7BZ
TEL.+44-1332-86-44-55 FAX.+44-1332-86-40-05

Star Micronics GmbH
Robert-Grob-Str.1.D-75305 Neuenburg, Germany
TEL.+49-7082-7920-0 FAX.+49-7082-7920-20

Star Micronics AG
Lautstrasse3, CH-8112 Otelfingen, Switzerland
TEL.+41-43-411-60-60 FAX.+41-43-411-60-66

Star Machine Tool France
90 Allee de Glaisy, ZI, 74300 Theyz Haute Savoie, France
TEL.+33-450-96-05-97 FAX.+33-450-96-91-54

Shanghai Xingang Machinery Co., Ltd.
2F, 229 Fute Rd.N. The China (Shanghai) Pilot Free Trade Zone
TEL.+86-21-5868-2100 FAX.+86-21-5868-2101

Star Micronics (Thailand) Co., Ltd.
289/23 M.13 Soi Kingkaew 25/1, Kingkaew Rd., T.Pachathewa A.Bangplee Samutprakarn 10540, Thailand
TEL.+66-2-186-8945-47 FAX.+66-2-183-7845

<http://www.star-m.jp/eng/>

9001 ISO 14001
CERTIFIED